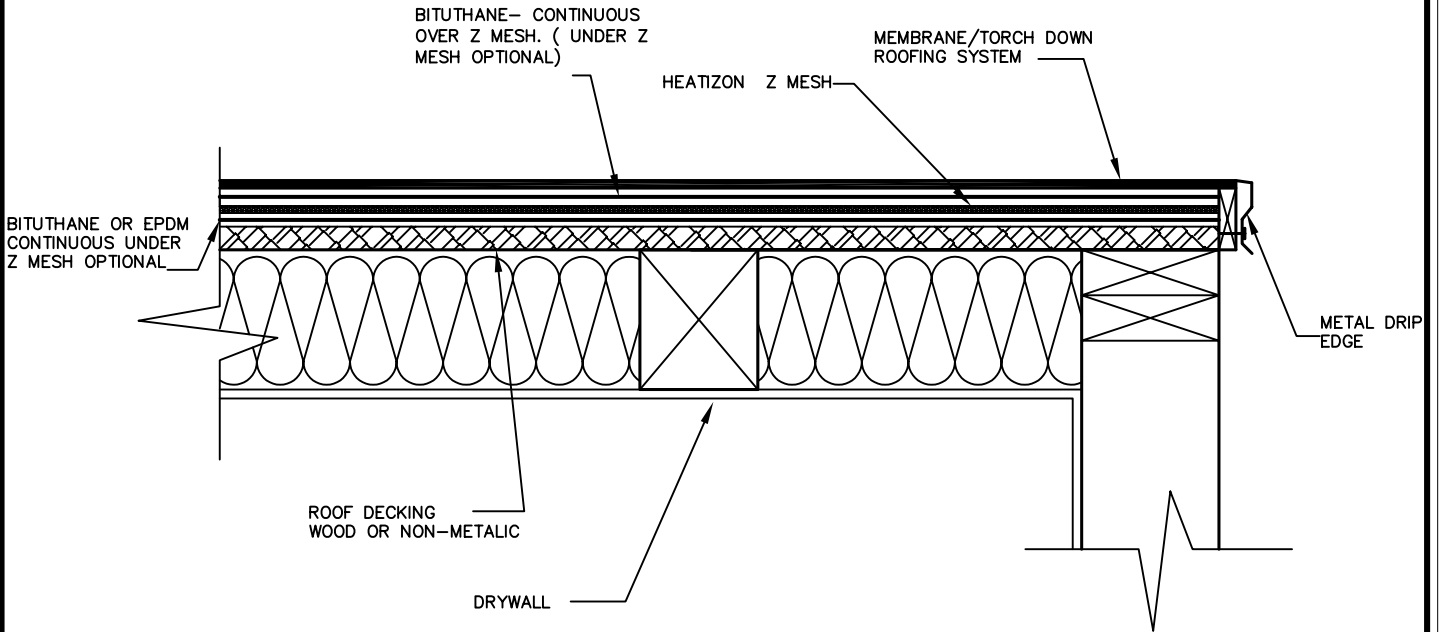


WARNING!!

DO NOT CUT OR DAMAGE Z MESH. DO NOT ALLOW Z MESH TO COME INTO CONTACT WITH ANY OTHER ELECTRICALLY CONDUCTIVE MATERIAL. DO NOT FASTEN THROUGH ANY ELECTRICALLY CONDUCTIVE MATERIAL AND Z MESH SIMULTANEOUSLY.



NOTE:
SINGLE PLY MEMBRANE (EPDM RECOMMENDED) OR 1/8" WOOD SHEATING TO COMPLETELY COVER METAL DRIP EDGE AND SEPARATE DRIP EDGE FROM Z MESH

DRAWING NO.:

RD-6

EAVE DETAIL - Z MESH UNDER MEMBRANE

DRAWING BY:

ACI

DATE:

MAY. 2005

HEATIZON SYSTEMS

advanced floor heating/ snow and ice removal systems

4137 SOUTH 500 WEST, MURRAY, UTAH 84123 PH (801) 293-1232 FAX (801) 293-3077