

HEATIZON

SYSTEMS

M331 Pavement Mounted Snow Switch

Features:

- Activates system when moisture is present on slab, and slab temperature is below 38° F
- System stays on for 6 hours after moisture is no longer detected
- Rugged construction
- Simple installation
- Low voltage operation

Benefits:

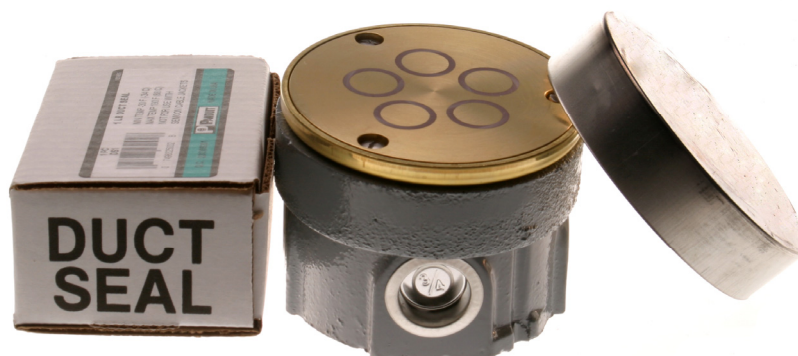
- Reliable snow melting
- Minimum energy costs

Specifications:

- Dimensions: 4.19" wide x (3" Min. or 3.83" Max.)
- Weight: 6 lbs

Applications:

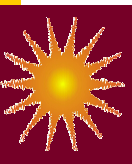
- Snow Melting
- For use with SLC500, CBXT Series or Radiant 8 Control Units.



M331
Pavement Mounted
Snow Switch

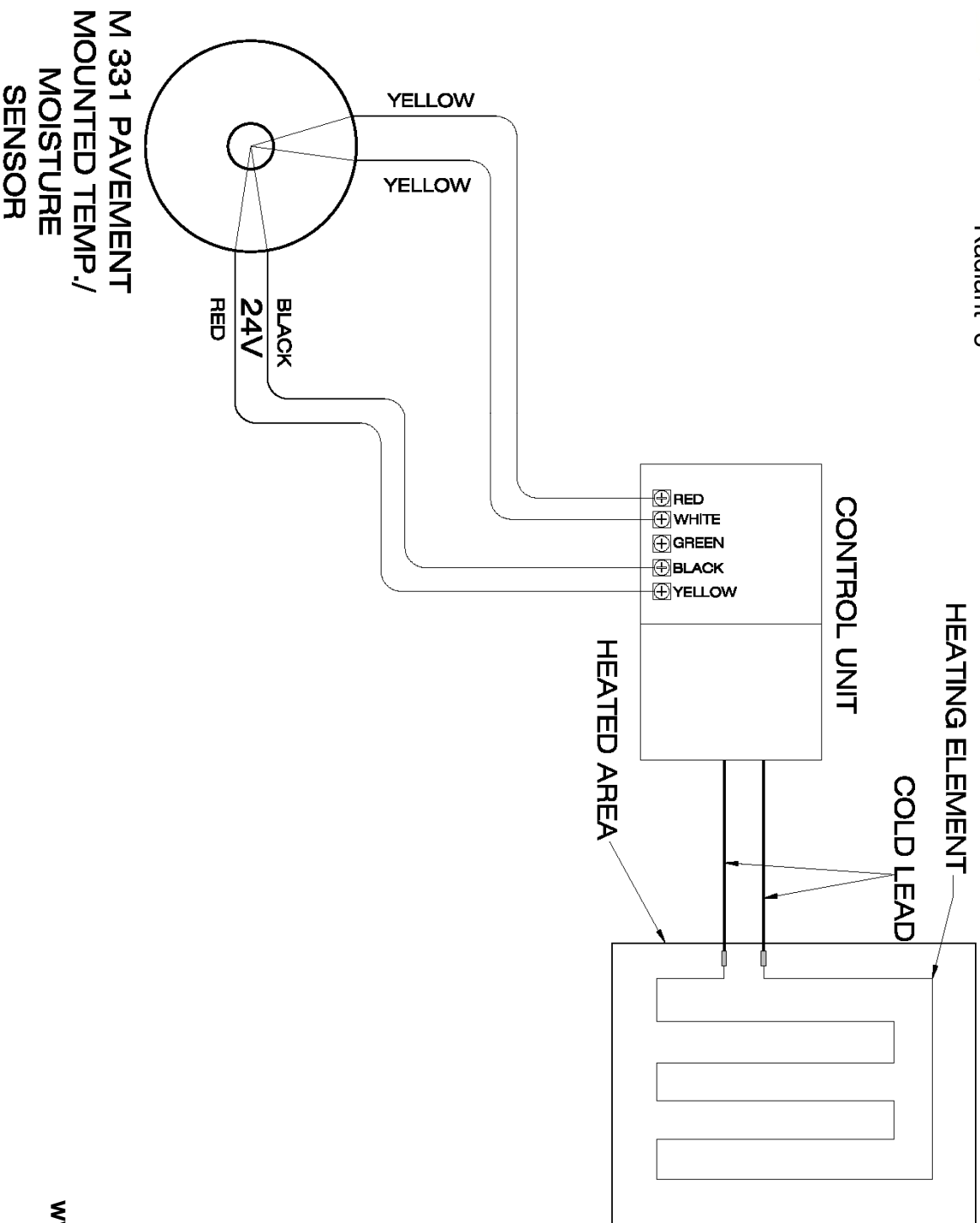
Customized Wiring Diagram

HEATIZON
SYSTEMS



M331 Pavement Mounted
Snow Sensor
SLC500, CBX Series or
Radiant 8

Use this wiring diagram when connecting this activation
device to one Heatizon Systems Control Unit



M 331 PAVEMENT
MOUNTED TEMP./
MOISTURE
SENSOR

888-239-1232
www.heatizon.com